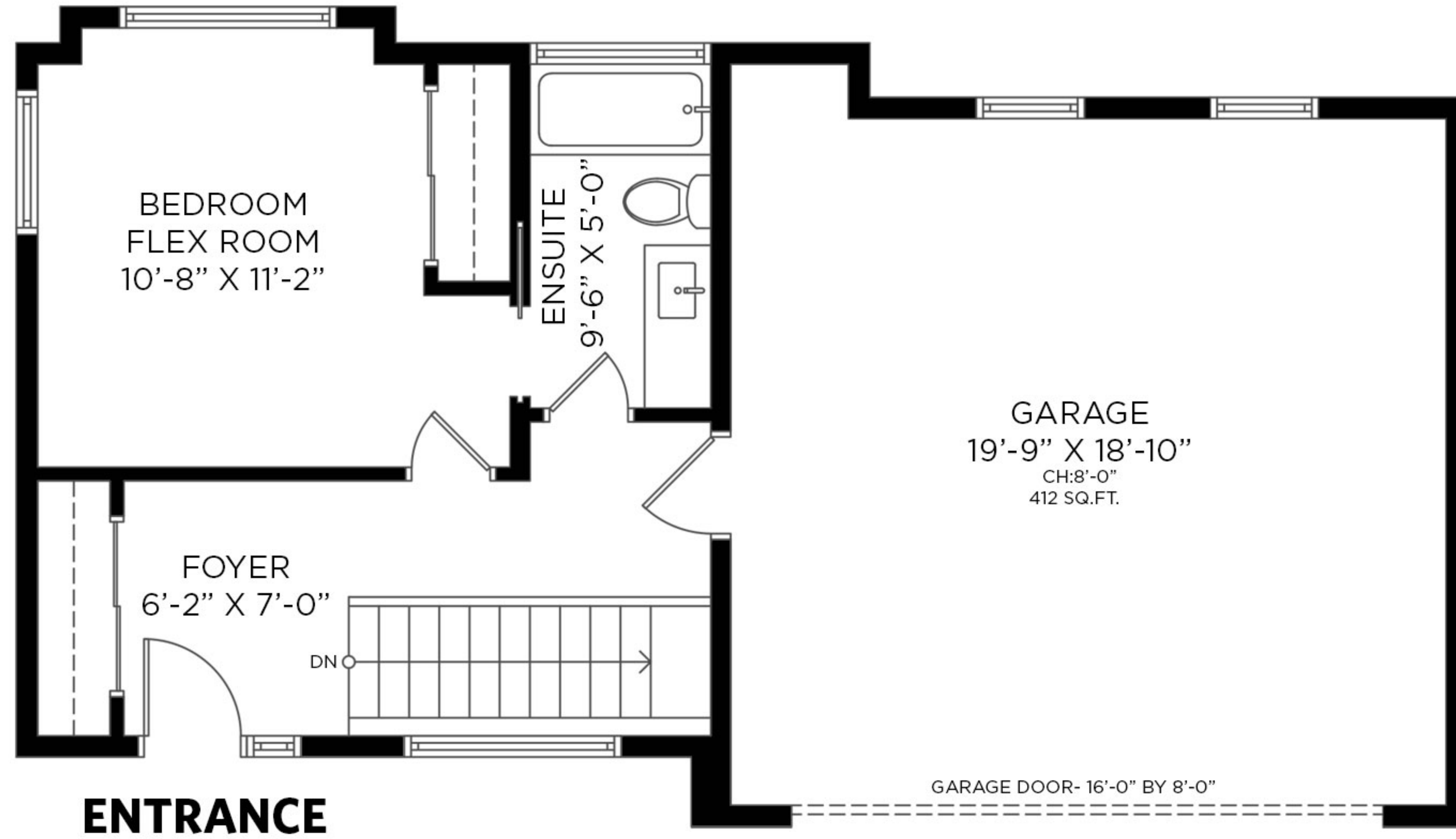


UPPER FLOOR - 396 SQ.FT.
CEILING HEIGHT: 9'-10'



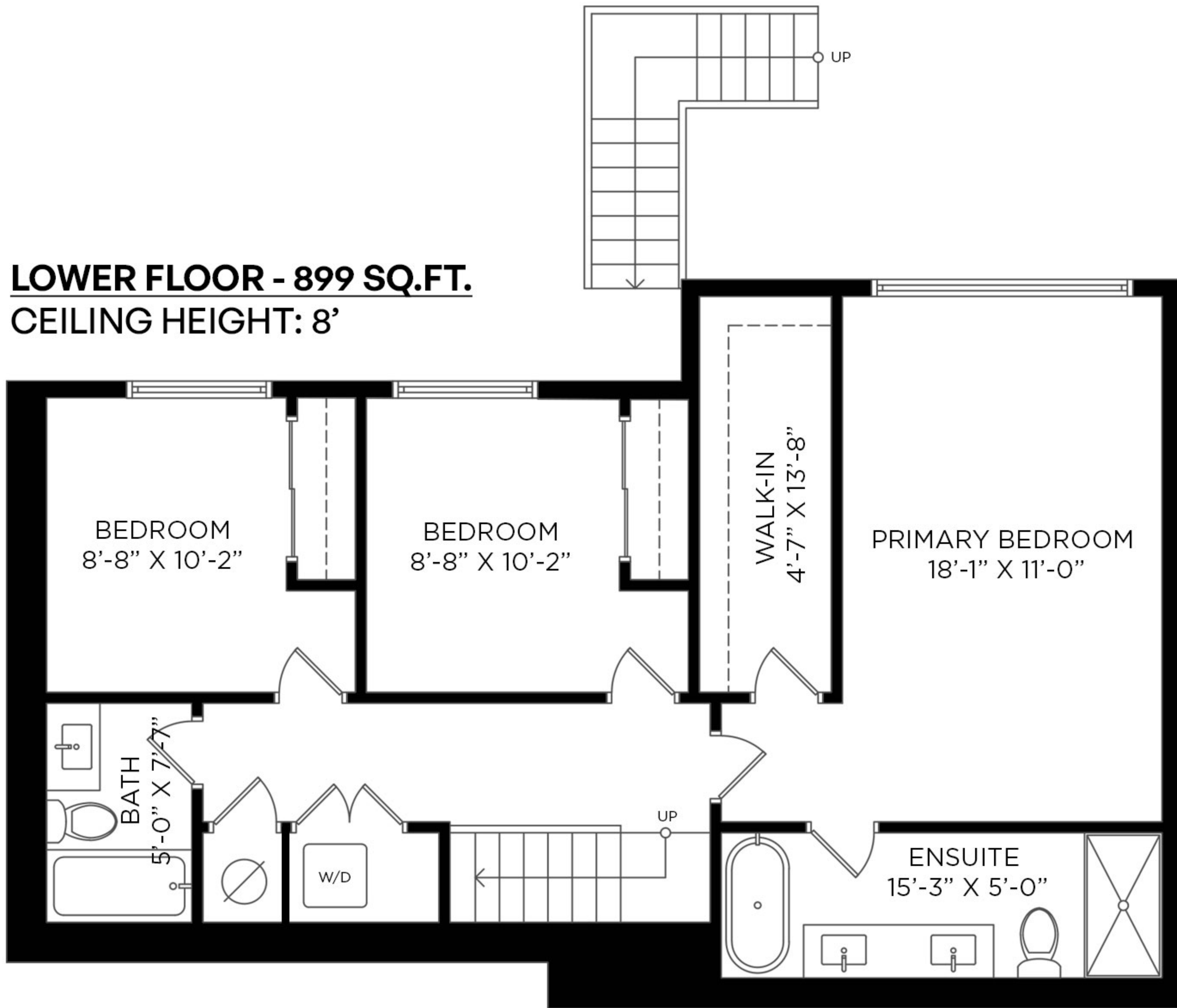
ENTRANCE

UNIT A
4 BEDROOMS + 3.5 BATHROOMS

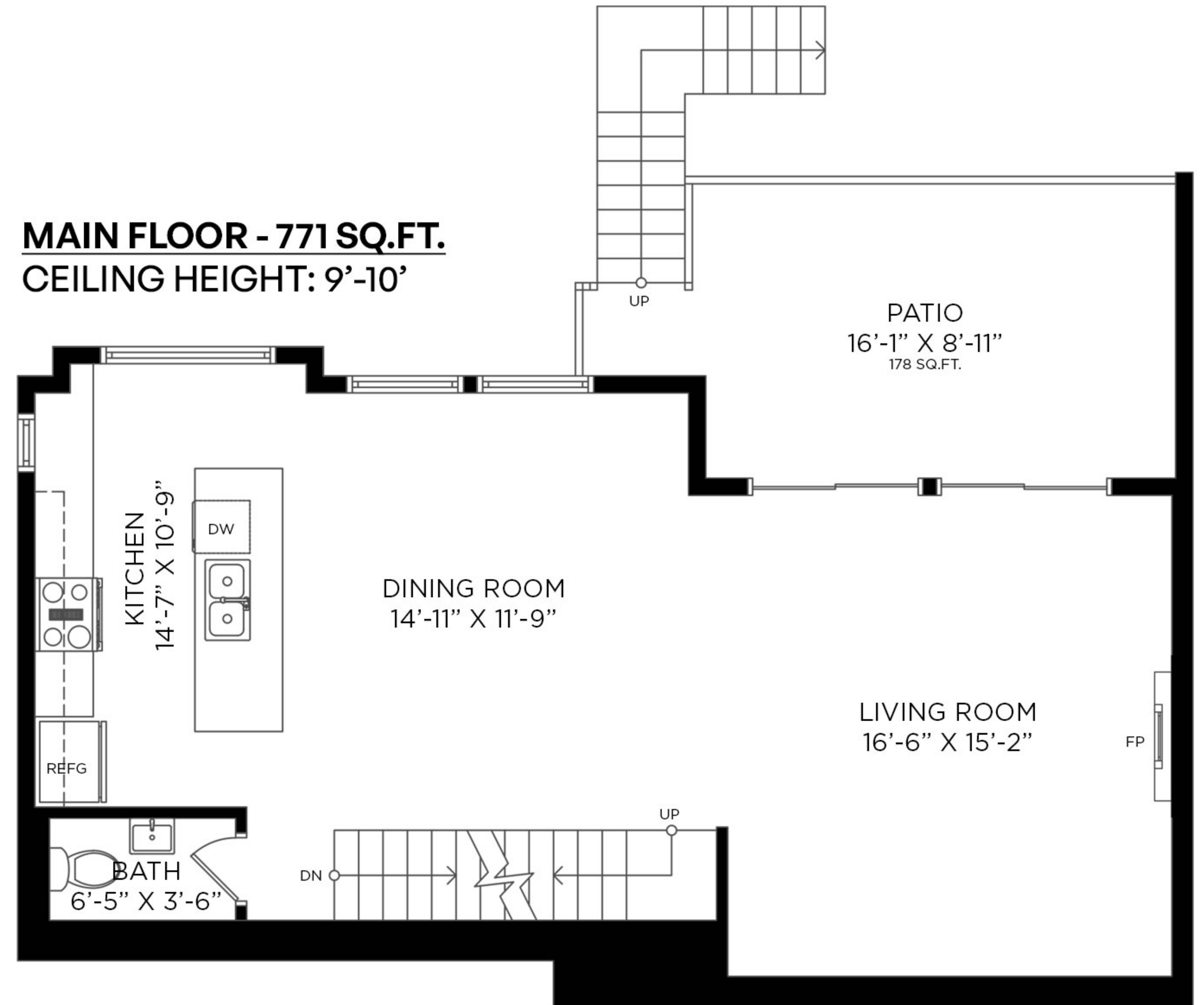
LOWER FLOOR: 899 SQ.FT.
MAIN FLOOR: 771 SQ.FT.
UPPER FLOOR: 396 SQ.FT.
TOTAL INTERIOR: 2,066 SQ.FT.

ATTACHED GARAGE: 412 SQ.FT.
EXTERIOR LIVING: 178 SQ.FT.

LOWER FLOOR - 899 SQ.FT.
CEILING HEIGHT: 8'



MAIN FLOOR - 771 SQ.FT.
CEILING HEIGHT: 9'-10'



Floor plan not suitable for architectural/construction purposes. ANSI Z765 standards used to calculate square footage. Buyer to verify. E&O insured for \$1,000,000.

UPPER FLOOR - 396 SQ.FT.
CEILING HEIGHT: 9'-10'



Floor plan not suitable for architectural/construction purposes. ANSI Z765 standards used to calculate square footage. Buyer to verify. E&O insured for \$1,000,000.

MAIN FLOOR - 771 SQ.FT.
CEILING HEIGHT: 9'-10'



Floor plan not suitable for architectural/construction purposes. ANSI Z765 standards used to calculate square footage. Buyer to verify. E&O insured for \$1,000,000.

LOWER FLOOR - 899 SQ.FT.
CEILING HEIGHT: 8'



Floor plan not suitable for architectural/construction purposes. ANSI Z765 standards used to calculate square footage. Buyer to verify. E&O insured for \$1,000,000.



- 1 Site Entries
- 2 Community Access Trail
- 3 Eagle Creek



DAFFODIL DR.

WESPORT RD.